



November 15, 2022

TSXV – BMET
OTCQB – BMTLF
FRANKFURT – 1OI.F

BeMetals Defines Priority Copper Targets and Commences Core Drilling at Pangeni Copper Project

Vancouver, British Columbia – BeMetals Corp. (TSXV: BMET, OTCQB: BMTLF, Frankfurt: 1OI.F) (the “Company” or “BeMetals”) is pleased to announce the completion of its 2022 aircore campaign, the definition of copper targets and commencement of core drilling at the Pangeni Copper Project (Pangeni” or the “Project” or the “Property”). The Project is located on the western extension of the prolific Central African Copperbelt in Zambia (the “Zambian Copperbelt”).

HIGHLIGHTS OF THE COMPLETED AIRCORE PROGRAM AND CORE DRILLING TARGETS:

- A total of 3,619 metres of shallow aircore drilling was completed in this phase of exploration to extend copper mineralization at existing copper prospects and to define new targets.
- A total of six targets for core drill testing have been identified at areas E, G, K, P, Q, and D.
- Core drilling has commenced to test the newly identified priority targets and is expected to be completed before year end, and their analytical results early in 2023.
- The 2022 core drilling will follow-up on the 2022 aircore results and the encouraging copper intersections made in 2021 at the Q and D prospects including:
 - **Q-Target:** Drill Hole Q3-C1 intersected 4.14 metres grading 0.62% copper (“Cu”)
 - Including: 1.30 metres grading 1.10% Cu
 - **D-Prospect:** Drill Hole D7-C1 intersected 5.00 metres grading 0.58% Cu
 - **D-Prospect:** Drill Hole D7-C2 intersected 3.37 metres grading 0.51% Cu
 - And also: intersected 6.00 metres grading 0.39% Cu

Note: Intertek Genalysis completed this previously reported analytical work of the intervals above with the core samples processed at their preparation facility in Kitwe, Zambia. All analytical procedures were conducted in an Intertek Genalysis laboratory in Australia. Reported widths are drilled core lengths as true widths are unknown at this time. Based upon current data it is estimated true widths range between 80 to 90% of the drilled intersections.

John Wilton, President and CEO of BeMetals stated, “We have now completed another phase of aircore drilling and are excited to have commenced core drill testing of six newly defined targets as part of our 2022 exploration program, funded pro-rata by both BeMetals and JOGMEC. The new targets were generated by the recent aircore program in combination with the historical data. Three of our targets are related to potential extensions of prospects where we previously intersected significant copper mineralization (Q, D, and SW Prospects) and the remaining three are newly generated or have been defined with data from the 2022 and prior aircore drilling information.

We currently interpret our D and SW Prospects to be related to basement hosted copper mineralization similar in style to Barrick Gold’s Lumwana copper mine in Zambia while the Q-Prospect, and potentially P and G targets, are in Katangan host units with similar geological settings to First Quantum Minerals’ Sentinel mine some 130 kilometres to the northeast of Pangeni. The Company expects to test at least five of the targets with six to eight core drill holes.”

PANGENI PROJECT 2022 EXPLORATION PROGRAM

From July to September 2022, 3,619 metres of shallow aircore drilling were completed at the Pangeni Project. The copper anomalies and targets resulting from this campaign are illustrated on Figure 1 below in context with the results of the prior aircore programs previously reported. The primary objective of the aircore drilling is to generate targets for concealed copper deposits under the thin Kalahari sand over to be subsequently tested by core drilling.

Figure 1 shows the locations of the priority new targets generated and defined potential extension of previously discovered copper prospects from the 2022 aircore results in combination with the previously reported phases of drilling. The aircore holes were spaced at various distances along the lines from 400-metre to 200-metre and 100-metre infill centres based upon field results and geological observations of the drill cuttings. The exploration program is jointly pro-rata funded by BeMetals and Japan Organization for Metals and Energy Security (“JOGMEC”).

Q-PROSPECT and E TARGET

Figure 2 shows the combined 2022 and previously reported copper aircore results in the Q-Prospect and E8 Target areas. At the Q-Prospect, drill hole Q3-C1 completed in 2021 intersected 4.14 metres grading 0.62% Cu (*from 92.36 metres drilled depth*) of copper oxide mineralization hosted within siltstones interpreted to be part of the Katangan Supergroup near interpreted basement units. Many of the world class, sediment-hosted, copper deposits and mines of the Central African Copperbelt occur in this same geological setting when coupled with favourable structural feeders for the copper mineralization.

The copper anomaly in aircore hole Q3-03 of 1,545 parts per million (“ppm”) copper, represents a target for core testing some 150 metres stepped back from drill hole Q3-C1 (Figure 2). Aircore hole Q3-12 with 502ppm copper, with copper oxide minerals identified in logging chips, also provides another potential follow-up target in this area dependent upon initial core information from the Q3-03 target.

Target E8 is situated to the northwest of the SW-Prospect as depicted on Figure 2. This relates to a 695ppm copper in bedrock anomaly in aircore hole E8-03 which is supported by a 903ppm copper in the Kalahari sand just above the bedrock contact.

D-PROSPECT

Figure 3 shows the location of 2022 aircore hole D5-06, which returned 1,424ppm copper in bedrock approximately 600 metres to the southwest of an untested 556ppm copper anomaly in D2-13. The D5-06 target represents a potential extension of mineralization first discovered at the D-Prospect near the end of 2019. Based upon this and subsequent core drilling results, this area remains an important target area for further exploration.

Thus far, copper mineralization in this area extends for at least 1.2 kilometres along the interpreted strike of the mineralization including holes D7-C1, and D7-C2. These core holes returned meaningful and multiple copper intersections ranging from 6.0 to 2.12 metres in width and 0.58% Cu to 0.32% Cu in grade (*0.3% Cu cut-off grade*). To date, significant copper mineralization has been intersected in five of the six core drill holes completed at the D-Prospect. The copper grades in many of the previous drill holes are similar to those for operating large-scale copper mines in the Domes Region of the Zambian Copperbelt (*Examples: First Quantum Minerals’ Sentinel Mine Reserves: 876.8 million tonnes grading 0.46% Cu⁽¹⁾ and Barrick Gold’s Lumwana Mine Reserves: 538.8 million tonnes grading 0.56% Cu⁽²⁾*). (See Figure 4 for other regional project locations).

(1) First Quantum Minerals Ltd. website, Mineral Reserves - depleted for mining as at 31st December 2019, and based on a \$3.00/lb Cu price. Sentinel Mine, Trident Project, North West Province, Zambia, NI 43-101 Technical Report, March 2020.

(2) Barrick Gold Corporation website, Mineral Reserves – December 31, 2013, Technical Report on the Lumwana Mine, North-Western, Province, Republic of Zambia, Barrick Gold Corporation, Report for NI 43-101, March 27, 2014.

P, G and K TARGETS

Figure 1 shows the location of newly defined, stand-alone copper targets on the P, G and K aircore lines. These targets for potential core drilling are focused on aircore holes P1-07B, P1-11A, G2-06 and K2-03B with copper anomalies of 699, 473, 1,447 and 495ppm respectively. The targets at the southern end of the P line specifically are currently interpreted as being potentially hosted Katangan units. Decisions on which of these targets to be tested, and their priority for the 2022 core drilling program will be made as the program advances based upon the geological information.

Tables 1 and 2 below provide details of the aircore anomalies discussed with hole ID, azimuth, dip, end of hole depth and collar coordinates. The quality assurance and quality control section below describes details of the sampling and analytical procedures.

Figure 1: Pangen Project 2022 Aircore (Blue circles) and Previous Aircore Drilling Results (Red circles)

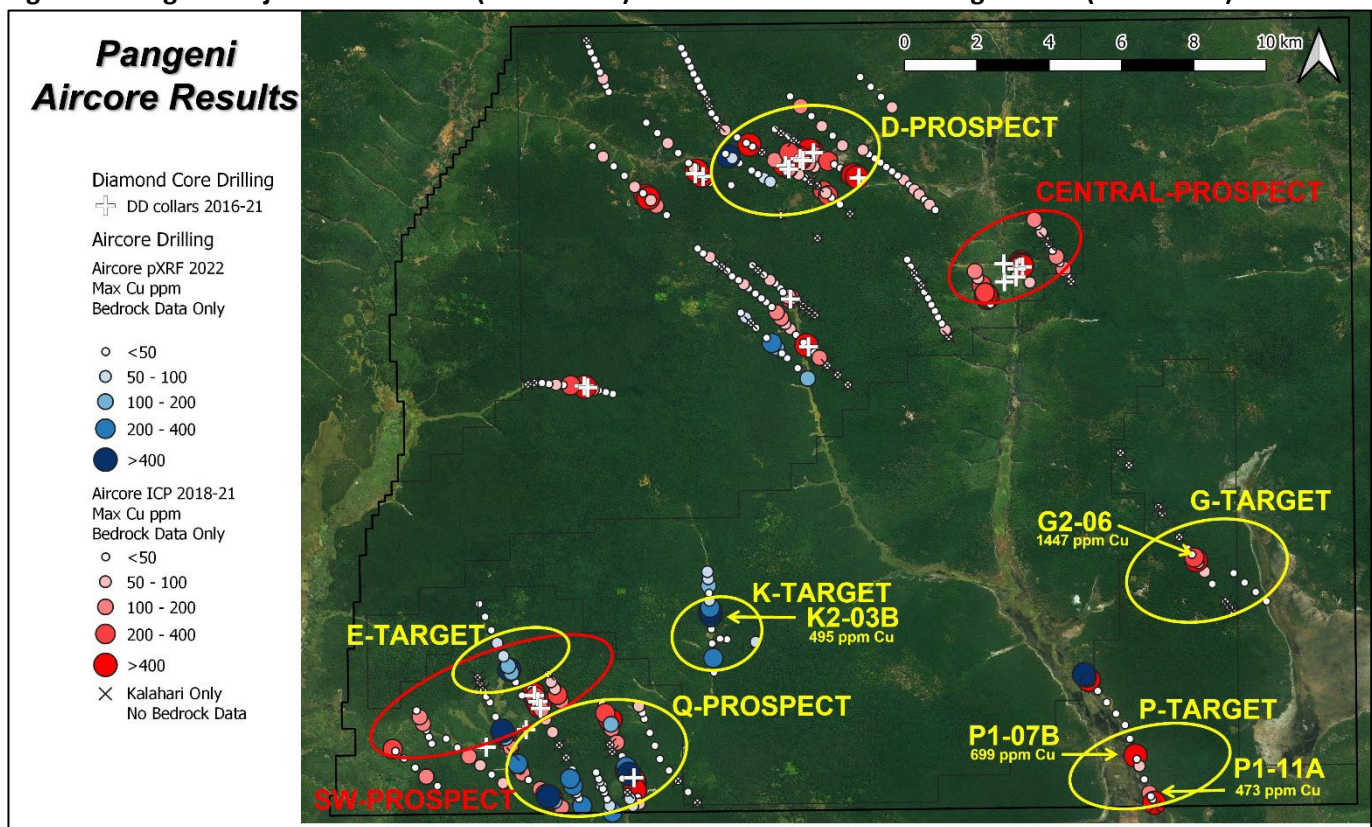


Figure 2: Q Prospect & E8 Target, 2022 Aircore (Blue circles) and Previous Aircore Drilling Results (Red circles)

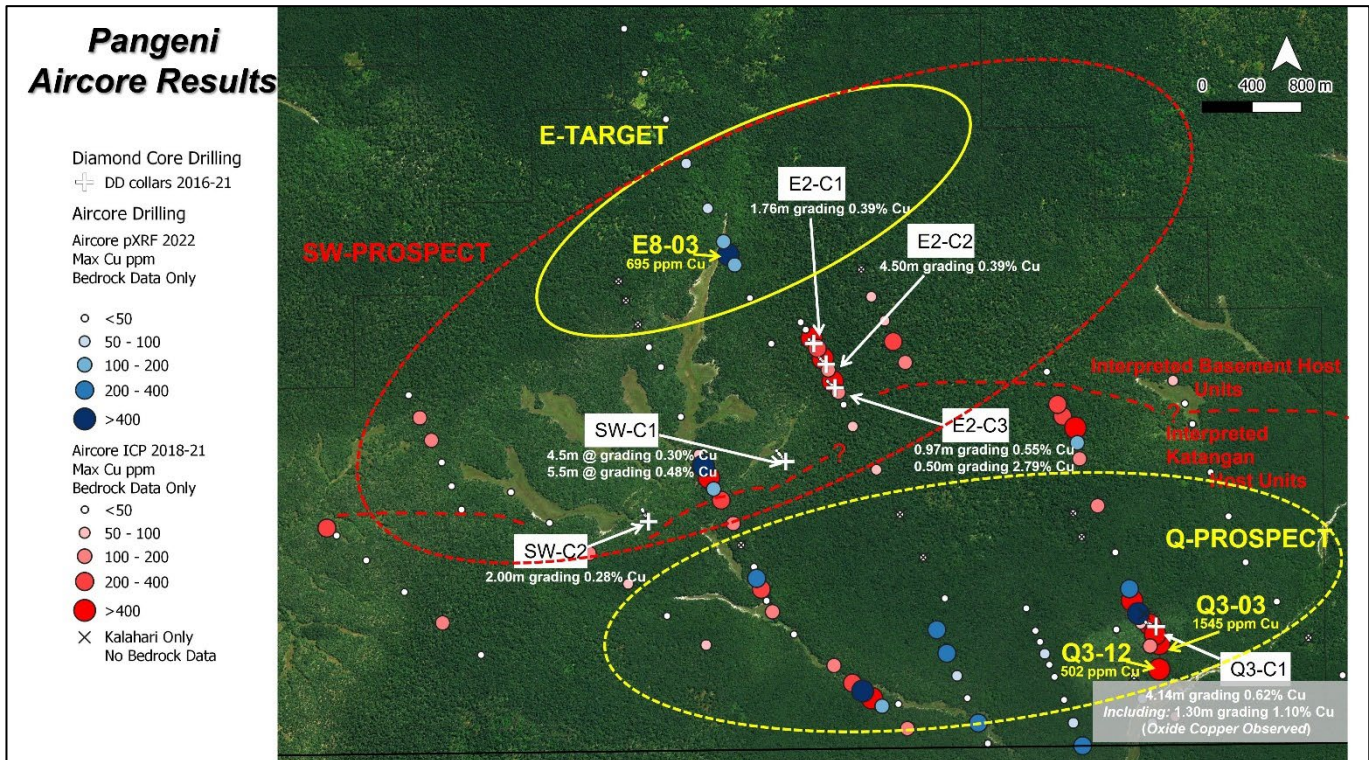


Figure 3: D Prospect, 2022 Aircore Drilling (Blue circles) and Historical Aircore Drilling Results (Red circles)

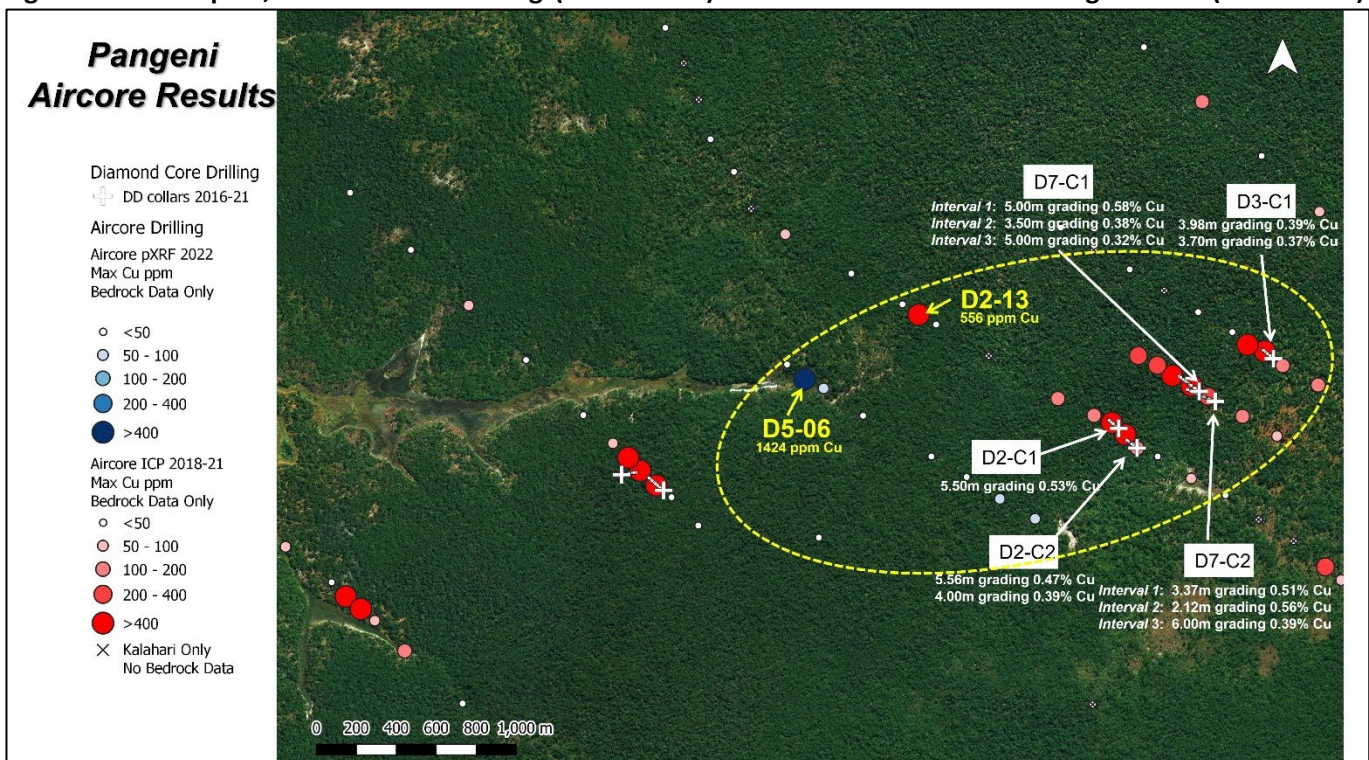


Table 1: Aircore Hole Results with Depth, Sample Interval, Copper Grade and Comments

Aircore Hole ID	From (m)	To (m)	Sample Interval (m)	Copper (ppm)	Comments (Unit/Sample Type)
Q3-03	59	60	1.00	1,545	Bedrock/ICP
Q3-12	62	63	1.00	502	Bedrock/ICP
E3-08	17	18	1.00	903	Kalahari Sand/pXRF
E3-08	22	23	1.00	695	Bedrock/pXRF
D5-06	19	20	1.00	1,424	Bedrock/pXRF
D2-13	57	58	1.00	556	Bedrock/ICP
P1-07B	35	36	1.00	699	Bedrock/ICP
P1-11A	58	59	1.00	473	Bedrock/ICP
G2-06	66	67	1.00	1,447	Bedrock/ICP
K2-03B	25	26	1.00	495	Bedrock/pXRF

Table 2: Aircore Hole ID, Azimuth, Dip, End of Hole Depth and Collar Coordinates

Aircore Hole ID	Azimuth Degree	Dip Degree	End of hole Depth (m)	Easting (m)	Northing (m)	Elevation (m)
Q3-03	360	-90	61	173077	8584280	1162
Q3-12	360	-90	64	173108	8583998	1155
E3-08	360	-90	24	169640	8587335	1220
D5-06	360	-90	22	175706	8601535	1288
D2-13	360	-90	60	176278	8601858	1346
P1-07B	360	-90	36	186967	8584954	1136
P1-11A	360	-90	63	187487	8583648	1121
G2-06	360	-90	69	188639	8590361	1166
K2-03B	360	-90	26	175199	8588952	1196

QUALITY ASSURANCE AND QUALITY CONTROL

The results reported here for core drilling and pre-2022 aircore (ICP) drilling were analyzed by Intertek Genalysis, an independent and accredited laboratory. Samples were prepared at their facility in Kitwe, Zambia and analytical work conducted in Australia. The results were determined using multi-acid, near total digest, and analyzed by Inductively Coupled Plasma (“ICP”) Optical (Atomic) Emission Spectrometry (“OES”). The core sampling was conducted with a robust sampling protocol that included the appropriate insertion of standard reference material, duplicates, and blanks into the sample stream.

The results from the 2022 aircore (pXRF) program were completed by Remote Exploration Services (“RES”) who managed all aspects of the field operations in-line with the standard operating procedures as previously and consistently implemented at this project. Representative material from each sampled metre of aircore drilling was dried, screened to 180 micron, bagged and transported to a field camp where they were analysed using the Olympus Vanta C Series Desktop XRF analyser (“pXRF”). Strict sampling protocol was observed throughout the pXRF analysis including; homogenisation, field duplicates, blanks, and calibration checks using Certified Reference Material. For a more detailed description of the aircore pXRF sampling protocol see BeMetals news release dated; *November 15, 2018, QA/QC section.*

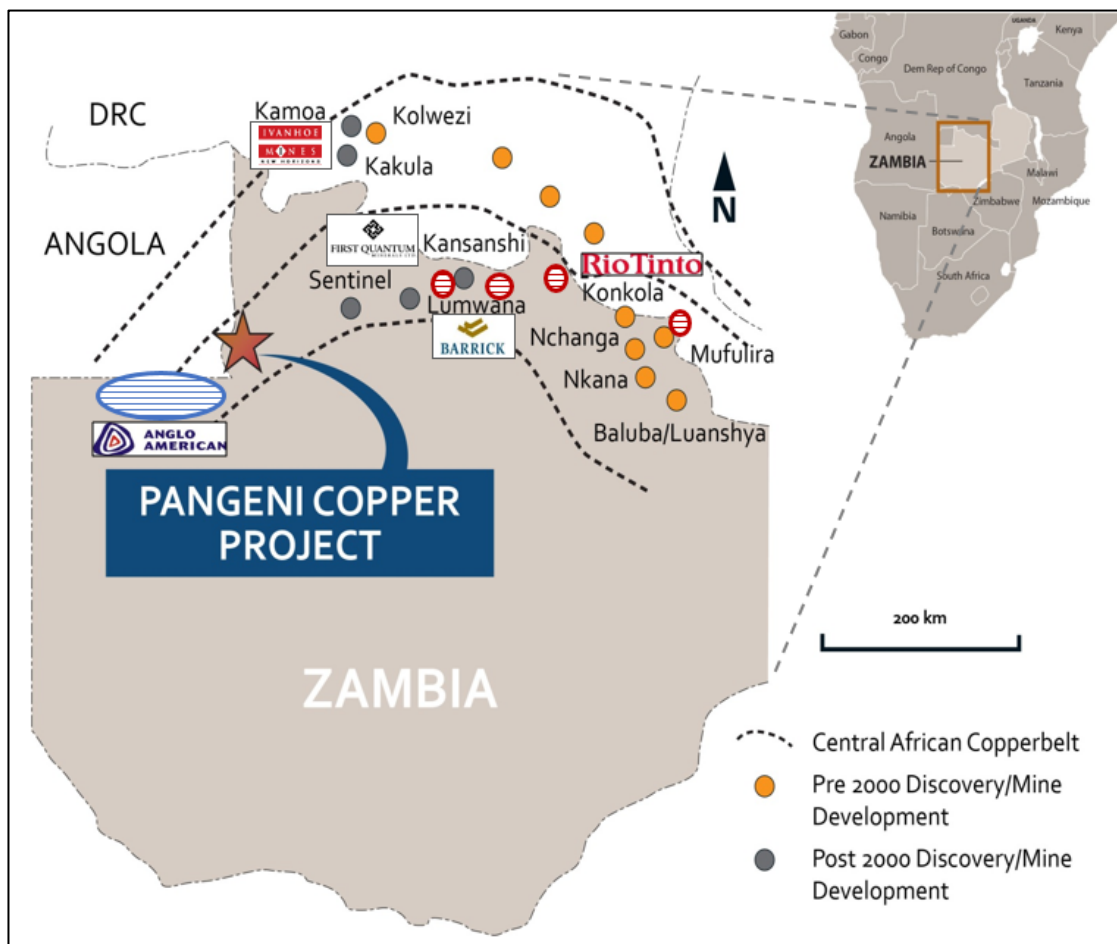
Field operations and management have been provided by RES an independent geological consulting and contracting company. The aircore and core drilling was conducted by Blurock Mining Services, of Kitwe, Zambia.

THE PANGENI COPPER PROJECT

The Pangeni Project is located on the western extension of the Zambian Copperbelt, within the Lufilian Arc, underlain by Katangan Supergroup metasediments situated unconformably on basement schists and gneisses, which are covered by a thin veneer of Kalahari sands. The open pit Sentinel Copper Mine is operated by First Quantum Minerals Ltd. some 130 kilometres to the northeast of the Pangeni Project. A number of major international mining companies have identified this region of the Zambian Copperbelt to be prospective for the discovery of tier one copper mines and are also conducting extensive exploration work in this area.

The Pangeni Project property is geologically prospective for the following deposit types; Basement-hosted Cu (analogues: the Lumwana Deposit, Nyungu Prospect), Sediment-hosted stratiform Cu-Co (analogues: Nchanga, Konkola, Nkana, and Mufulira Deposits), other Domes Region Deposits e.g. Sentinel, and DRC Copperbelt Deposits e.g. Lonshi, Frontier, Kamo-a-Kakula).

Figure 4. Pangeni Copper Project Location Map in Zambia



ABOUT BEMETALS CORP.

BeMetals is a precious and base metals exploration and development company focused on becoming a leading metal producer through the acquisition of quality exploration, development and potentially production stage projects. The Company has recently established itself in the gold sector with the acquisition of certain wholly owned exploration projects in Japan. BeMetals is also progressing both its advanced high-grade, zinc-silver-gold-copper polymetallic underground exploration at the South Mountain Project in Idaho through a preliminary economic assessment, and its tier-one targeted, Pangeni Copper Exploration Project in Zambia. Guiding and leading BeMetals' growth strategy is a strong board and management team, founders and significant shareholders of the

Company, who have an extensive proven record of delivering considerable value in the mining sector through the discovery, construction and operation of mines around the world.

The technical information in this news release for BeMetals has been reviewed and approved by John Wilton, CGeol FGS, CEO and President of BeMetals, and a "Qualified Person" as defined under National Instrument 43-101.1

ON BEHALF OF BEMETALS CORP.

"John Wilton"

John Wilton

President, CEO and Director

For further information about BeMetals please visit our website at bemetalscorp.com and sign-up to our email list to receive timely updates, or contact:

Derek Iwanaka

Vice President, Investor Relations & Corporate Development

Telephone: 604-928-2797

Email: diwanaka@bemetalscorp.com

Neither the TSX Venture Exchange nor its Regulation Services Provider (as that term is defined in the policies of the TSX Venture Exchange) accepts responsibility for the adequacy or accuracy of this news release

Cautionary Note Regarding Forward-Looking Statements

This news release contains "forward-looking statements" and "forward looking information" (as defined under applicable securities laws), based on management's best estimates, assumptions and current expectations. Such statements include but are not limited to, statements with respect to future exploration, development and advancement of the South Mountain Project, the Pangeni project and the Japan properties, and the acquisition of additional base and/or precious metal projects. Generally, these forward-looking statements can be identified by the use of forward-looking terminology such as "expects", "expected", "budgeted", "forecasts", "anticipates", "plans", "anticipates", "believes", "intends", "estimates", "projects", "aims", "potential", "goal", "objective", "prospective", and similar expressions, or that events or conditions "will", "would", "may", "can", "could" or "should" occur. These statements should not be read as guarantees of future performance or results. Such statements involve known and unknown risks, uncertainties and other factors that may cause actual results, performance or achievements to be materially different from those expressed or implied by such statements, including but not limited to: the actual results of exploration activities, the availability of financing and/or cash flow to fund the current and future plans and expenditures, the ability of the Company to satisfy the conditions of the option agreements for the South Mountain Project and/or the Pangeni Project, and changes in the world commodity markets or equity markets. Although the Company has attempted to identify important factors that could cause actual results to differ materially from those contained in forward-looking statements, there may be other factors that cause results not to be as anticipated, estimated or intended. There can be no assurance that such statements will prove to be accurate, as actual results and future events could differ materially from those anticipated in such statements. The forward-looking statements and forward looking information are made as of the date hereof and are qualified in their entirety by this cautionary statement. The Company disclaims any obligation to revise or update any such factors or to publicly announce the result of any revisions to any forward-looking statements or forward looking information contained herein to reflect future results, events or developments, except as require by law. Accordingly, readers should not place undue reliance on forward-looking statements and information. Please refer to the Company's most recent filings under its profile at www.sedar.com for further information respecting the risks affecting the Company and its business.