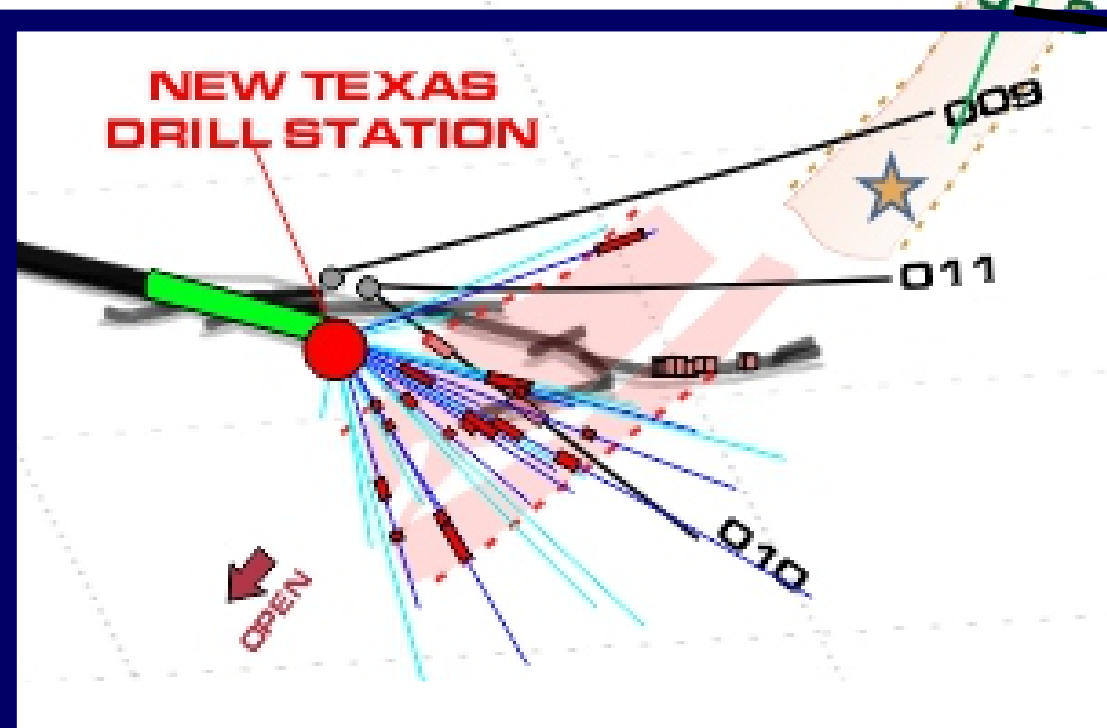
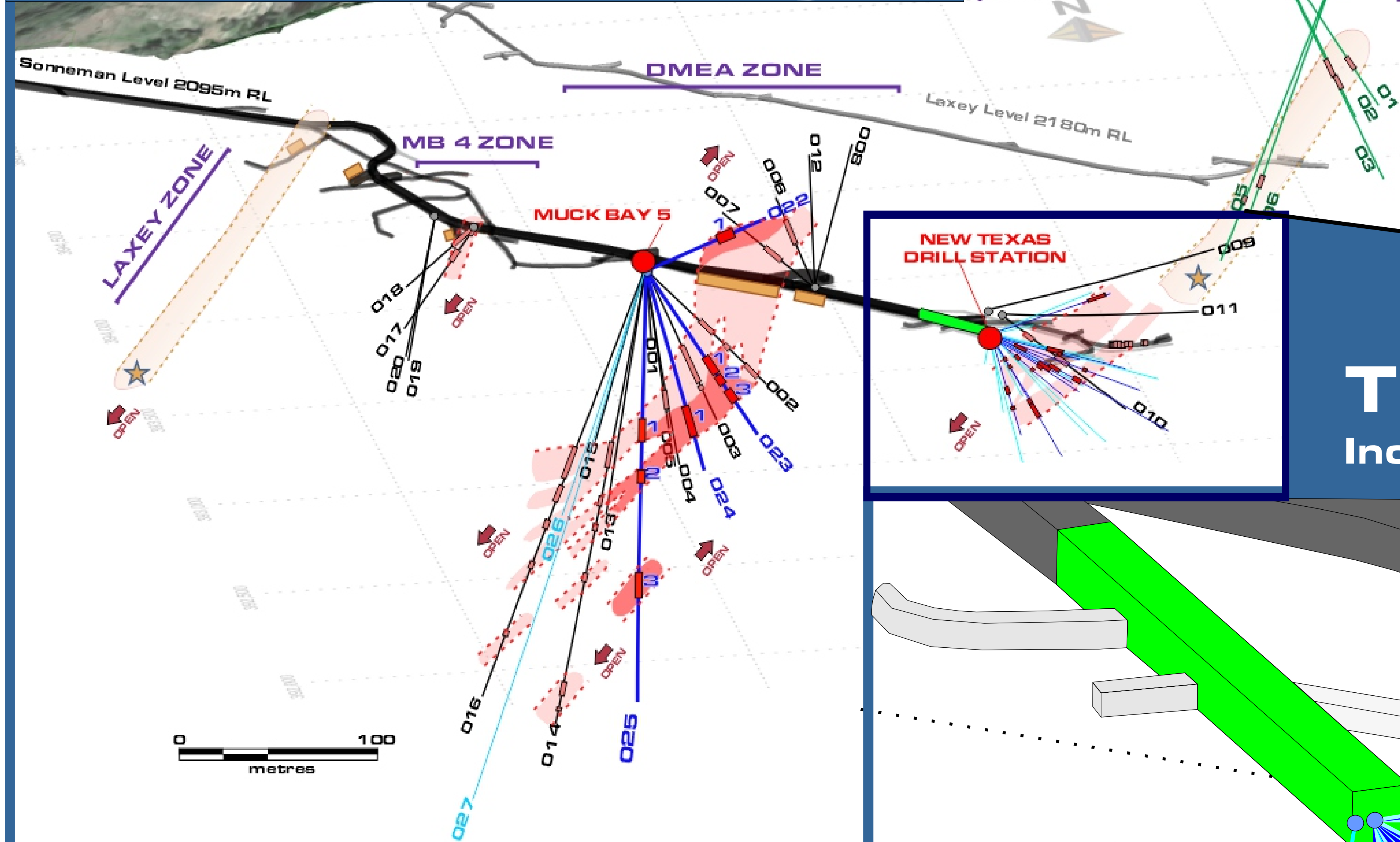


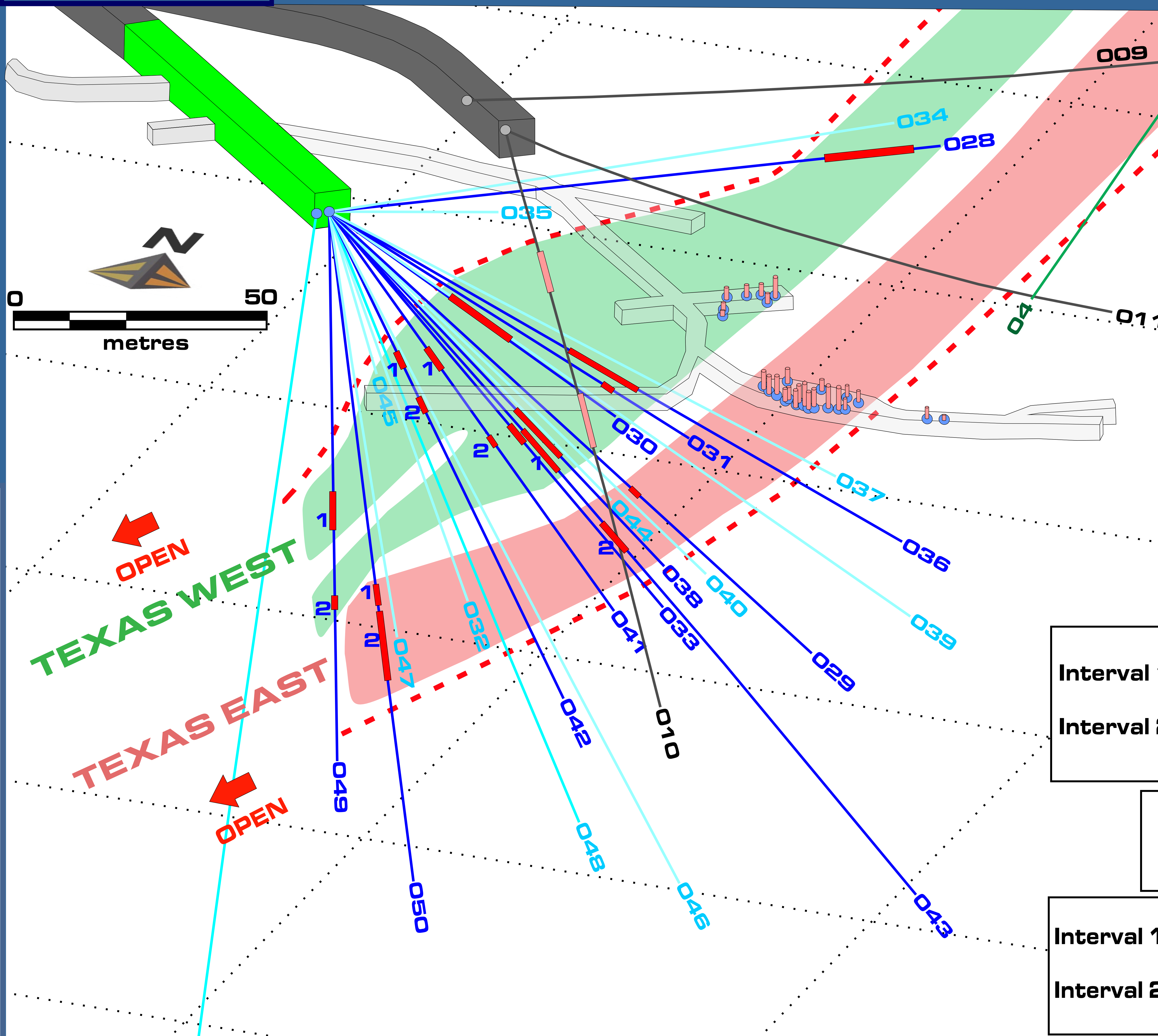
South Mountain Targets

2020 Texas Zone Exploration



Texas Zone Detailed View

Inclined view NW 340



❄️❄️❄️ 2019 Drill hole Intercepts appearing in pale red previously reported in January 20, 2020 News Release

❄️❄️❄️ Texas drilling and historic channel sample results previously reported in September 10, 2020 News Release

- LEGEND**
- 1 022 2020 Drill Hole with Intercept
 - 022 2020 Drill Hole pending results
 - 001 2019 Drill Hole with Intercept (SM19-Series)
 - 01 2013 Drill Hole with Intercept (TX13-Series)
 - 2020 Reactivated mine drift
 - 2019 Active mine drift
 - Historic deactivated mine drift
 - Bowes Channel Sample Location
 - Composite Rib Sample Location
 - ★ Significant Historic Drill Hole Assay
 - Texas West Copper-Silver Zone
 - Texas East Zinc-Silver-Gold Zone
 - - - Inferred extents of Texas Zone Mineralization

SM20-028 Interval 1 10.85m @ 2.56% Cu; 260.1 g/t Ag; 0.26 g/t Au; 0.13% Zn
SM20-036 Interval 1 9.54m @ 0.99% Cu; 316.9 g/t Ag; 0.25 g/t Au; 2.15% Zn
SM20-031 Interval 1 1.37m @ 1.56% Cu; 306.5 g/t Ag; 0.40 g/t Au; 2.21% Zn
SM20-030 Interval 1 8.29m @ 1.13% Cu; 125.1g/t Ag; 0.40 g/t Au; 0.26% Zn
SM20-029 Interval 1 1.34m @ 19.67% Zn; 229.3 g/t Ag; 3.82 g/t Au; 0.25% Cu
SM20-038 Interval 1 7.62m @ 1.64% Cu; 279.5 g/t Ag; 0.74 g/t Au; 0.55% Zn
SM20-043 Interval 1: 7.01m @ 2.84% Cu; 181.5 g/t Ag; 0.22 g/t Au; 0.29% Zn Interval 2: 4.79m @ 3.81% Cu; 244.3 g/t Ag; 0.17g/t Au; 0.07% Zn
SM20-033 Interval 1 2.65m @ 2.77% Cu; 251.3 g/t Ag; 0.37 g/t Au; 0.15% Zn
SM20-041 Interval 1: 3.10m @ 1.29% Cu; 177.5 g/t Ag; 0.09 g/t Au; 0.04% Cu Interval 2: 1.52m @ 0.44% Cu; 169.6 g/t Ag; 2.37 g/t Au; 1.99% Zn
SM20-049 Interval 1: 4.19m @ 0.18% Zn; 89.4 g/t Ag; 0.07 g/t Au; 1.82% Cu Interval 2: 1.20m @ 0.07% Zn; 138 g/t Ag; 0.14 g/t Au; 2.42% Cu
SM20-050 Interval 1: 2.31m @ 0.10% Zn; 145.9 g/t Ag; 0.18 g/t Au; 2.91% Cu Interval 2: 8.35m @ 4.17% Zn; 194.8 g/t Ag; 4.05 g/t Au; 0.54% Cu
SM20-042 Interval 1: 1.89m @ 1.92% Cu; 103.0 g/t Ag; 0.08 g/t Au; 0.03% Zn Interval 2: 1.80m @ 1.06% Cu; 114.0 g/t Ag; 0.08 g/t Au; 0.10% Cu